

Metric vs. US

Technical Support Bulletin

Units of Measure

Last Update September 15, 2014

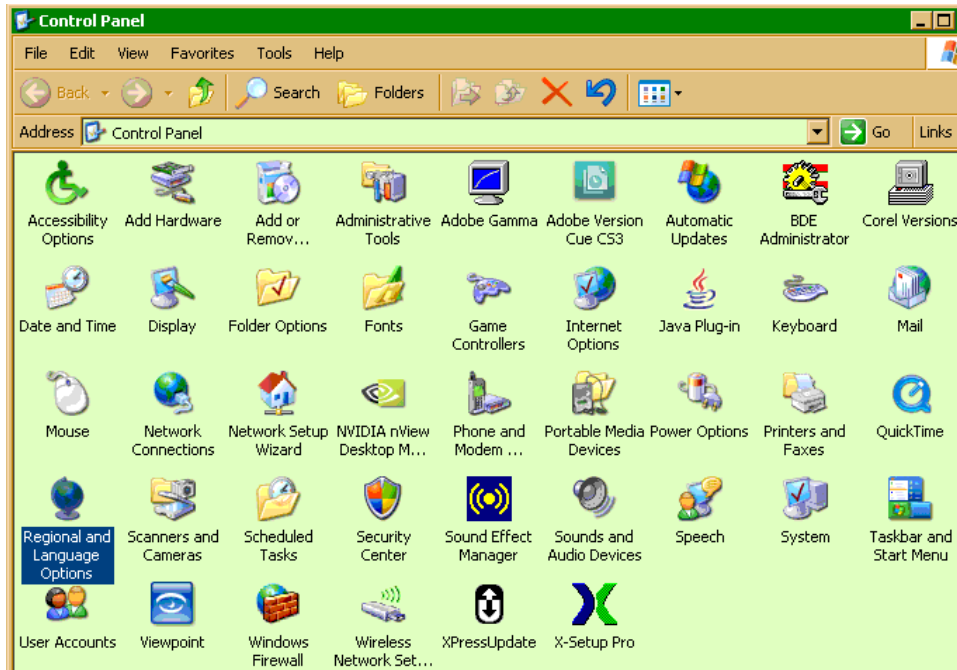
Abstract: This TSB is written to help international users to change between US units of measure and metric units of measure.

Windows XP instructions for units of measure change

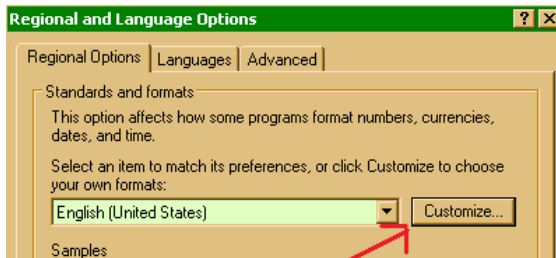
Start the control panel



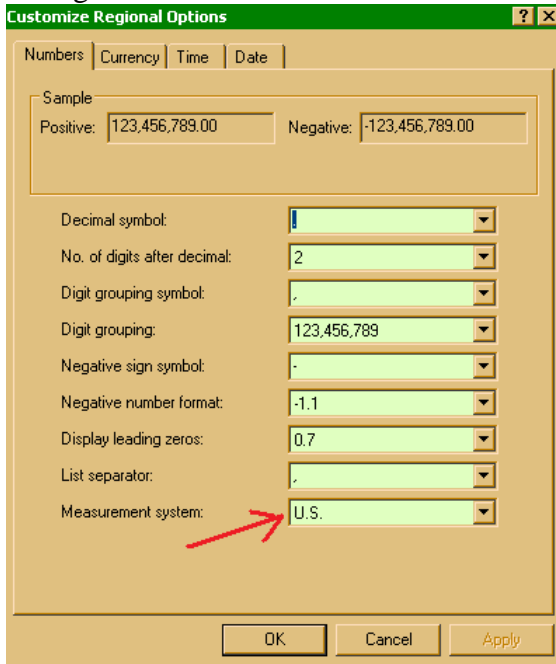
Select regional and Language options



Press Customize



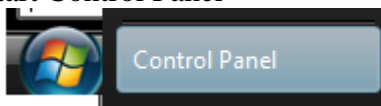
Change units of measure



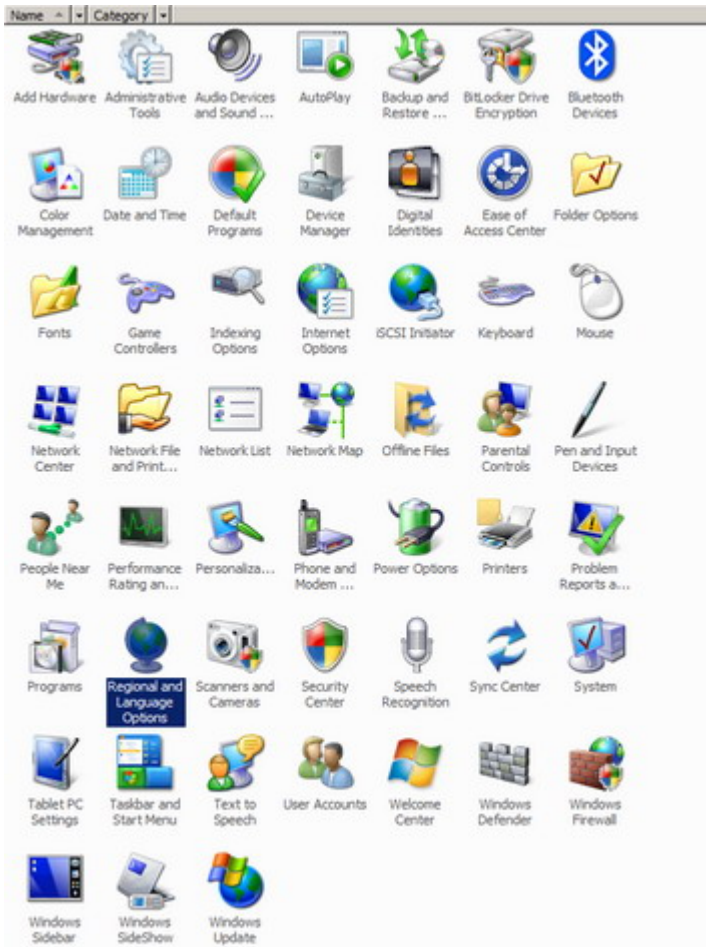
Select desired measurement system

Windows Vista, 7 and 8 instructions for units of measure change

Start Control Panel



Select Regional and Language Options

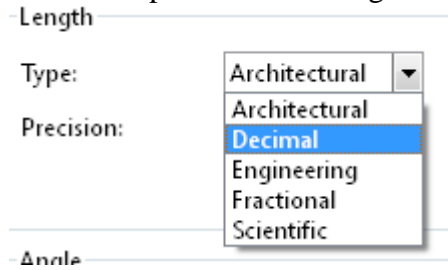


Select Customize this format and change measurement systems

The image displays two overlapping dialog boxes from Windows. The left dialog is titled 'Regional and Language Options' and has the 'Formats' tab selected. It shows the 'Current format' as 'English (United States)'. Below this, it lists examples of data display: Number: 123,456,789.00; Currency: \$123,456,789.00; Time: 6:38:48 PM; Short date: 10/18/2007; Long date: Thursday, October 18, 2007. A red arrow points to the 'Customize this format...' button at the bottom. The right dialog is titled 'Customize Regional Options' and has the 'Numbers' tab selected. It shows an 'Example' with 'Positive: 123,456,789.00' and 'Negative: -123,456,789.00'. Below this, various settings are shown in dropdown menus: 'Decimal symbol' (.), 'No. of digits after decimal' (2), 'Digit grouping symbol' (,), 'Digit grouping' (123,456,789), 'Negative sign symbol' (-), 'Negative number format' (-1.1), 'Display leading zeros' (0,7), 'List separator' (,), 'Measurement system' (U.S.), 'Standard digits' (0123456789), and 'Use native digits' (Never). A red arrow points to the 'Measurement system' dropdown. Both dialogs have 'OK', 'Cancel', and 'Apply' buttons at the bottom.

AllenCAD display units

Tools -> Options -> Drawing Settings -> Unit System



AllenCAD changing units of drawing for tiling.

Allen tile accepts drawings in either mm or inches as the units of measure. You just click on the document conversion options as to the measurement system units you have drawn your countertop.

Open a drawing with AllenCAD.

Select Tile Icon 

Select the counter top

Right click to finish selection

Uncheck or check the Drawing is in inches or Drawing in is mm so that the correct message is displayed.

If your drawing is in mm, check this box,
If your drawing is in inches, uncheck this box.

