

ALLEN DATAGRAPH

Technical Support Bulletin: Tiling with Corel Draw

Last Update September 25, 2003

Abstract: Tiling with Corel Draw 9 and Direct Cut Driver Build 10. The Cad system is responsible for tiling.

Example:

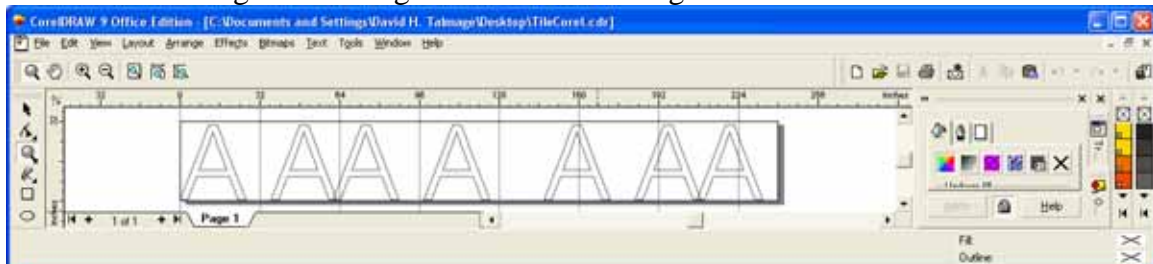
Suppose you want to cut an image that is 240 inches (609 cm) by 30 inches (76 cm). For simplicity sake I will fill the image the 30 inch tall A's.

As discussed in the Using Corel document the frame size vs. DPI must be chosen from the table below.

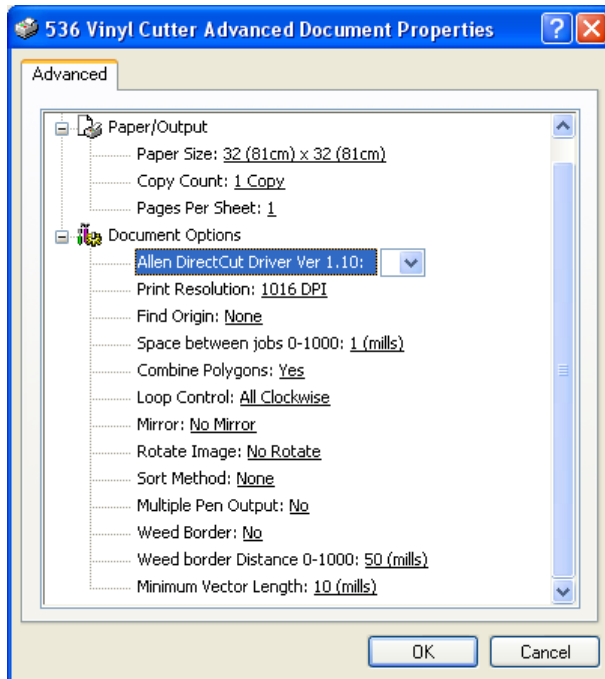
Min Image Size	Max Image Size	DPI
0" (0 cm) x 0" (0 cm)	32" (81 cm) x 32" (81 cm)	1016
32" (81 cm) x 32" (81 cm)	64" (162 cm) x 64" (162 cm)	508
64" (162 cm) x 64" (162 cm)	129" (327 cm) x 129" (327 cm)	254

We look up the height of the image in this table and find that we can use 1016 dpi for this image. Change the dimensions of the page to 240 x 32 inches (81 x 81 cm).

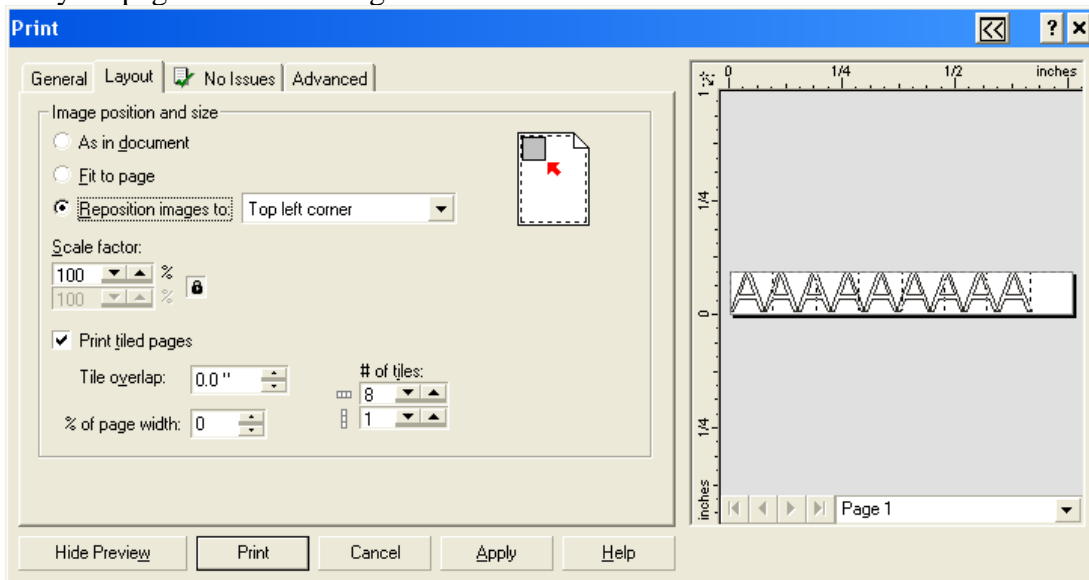
Create the drawing within the guidelines. I used large unfilled/outlined letter A's.



Click on file print. Select Direct Cut Driver. Change properties as shown below.



On Layout page select the tiling check box



Click on Print

I have attached the example Drawing file [Web Site Copy / CD Copy](#) and its output file [Web Site Copy / CD Copy](#)